

SOLAR FIRST

DATASHEET



- ▶ Effectively use of the space while generating electricity.
- ▶ Different options for both single and double rows of parking.
- ▶ Pre-assembly supporting beam to save on site installation time.



PRODUCT DESCRIPTION

This solar panel mounting system is a high strength aluminium alloy carport structure which offers a car park canopy to shield sunlight and a solar power platform to utilize sunlight.

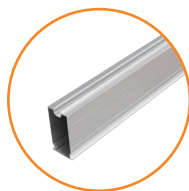
The carport can be designed to be waterproof to drain away rainfall (instead of blocking water by adhesive or by rubber fillers) from gap of solar modules, to drainage cutters, to drainage pipes, and then to drainage channel.

Structure type: butterfly type, double pitched type, single pitched type (W type & N type)

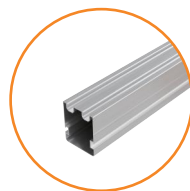
PRODUCT DESCRIPTION



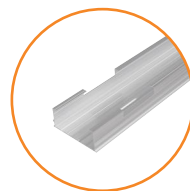
Column



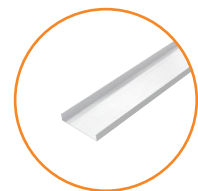
Rail



Beam



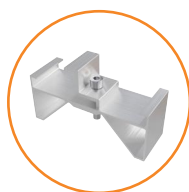
Main Gutter



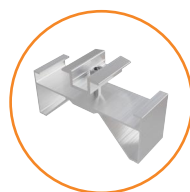
Cross Gutter



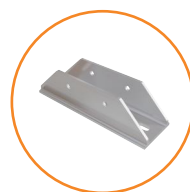
H Connector



End Clamp Kit



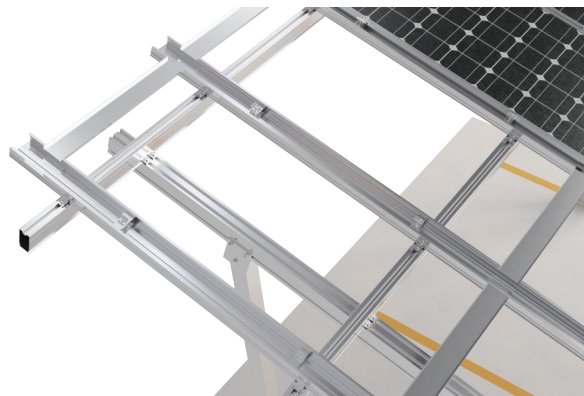
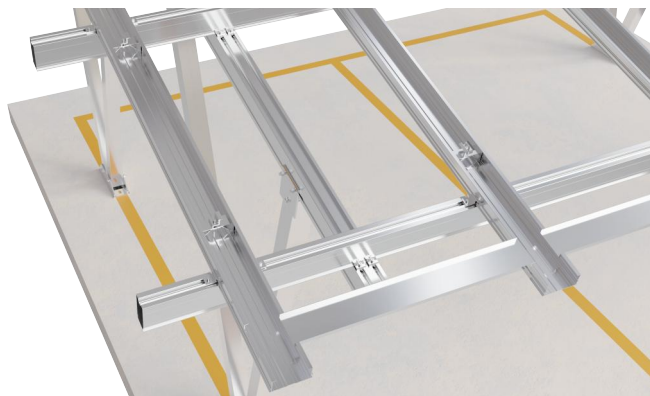
Mid Clamp Kit



Base



Beam Clamp Kit



TECHNICAL SPECIFICATIONS

Type	Parameter details
Applicable site	Ground
Foundation	Concrete
Wind load	up to 60m/s
Tilt angle	0-15°
Snow load	up to 1.4KN/m ²
Main material	GB50009-2012, EN1990:2002, ASCE7-05, AS/NZS1170, JIS C8955:2017, GB50429-2007
Standard	Anodized Aluminum AL6005-T5, Stainless Steel SUS304
Warranty	10 Years Warranty